

Objectives

This document explains how to install and configure the necessary software components to allow pilots using X-Plane to fly with live ATC, via the Fly UK FSD server.

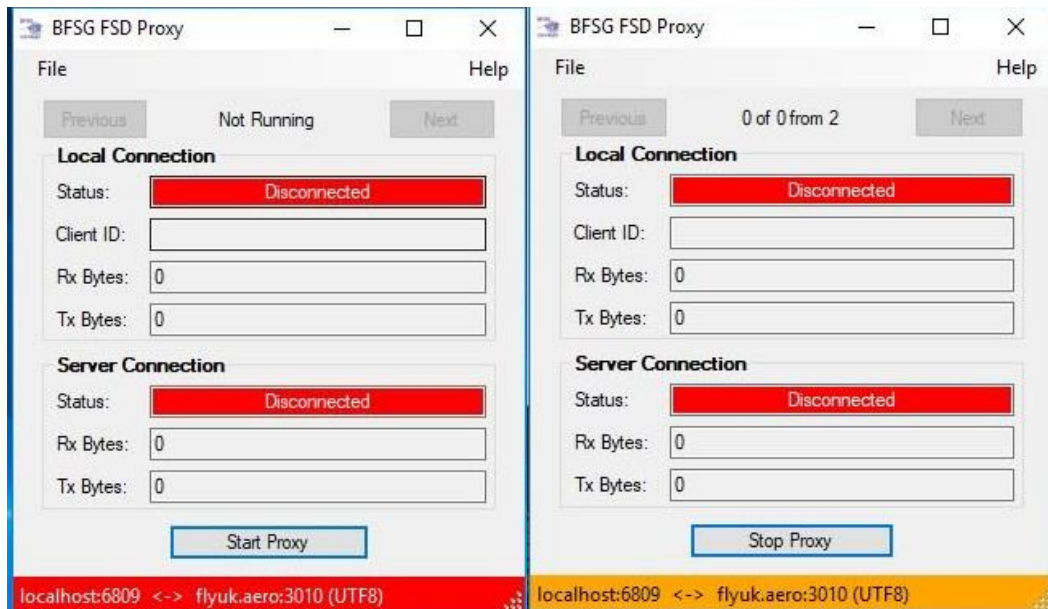
Acknowledgements

Thanks to UKV3396 Richard Merrin for the concise instructions on the forums.

Package Installation and Setup

The following procedures assume that both X-Plane and XSquarkBox have already been installed.

- 1) Install the Fly UK FSD (BFSG) Proxy Server from Crew Centre > SkyTrack & Downloads under the Misc. Downloads tab [link](#).
- 2) Start the BFSG FSD Proxy application and click "Start Proxy". It should look like this (before and after starting):



- 3) Start X-Plane. In the 'Plugins' dropdown, select 'XSquawkBox' and then 'Connect' as you usually would for a Vatsim connection, but DON'T connect yet as you need to change some settings.

NOTE YOUR ORIGINAL SETTINGS AS THEY WILL NEED CHANGING BACK TO USE VATSIM.

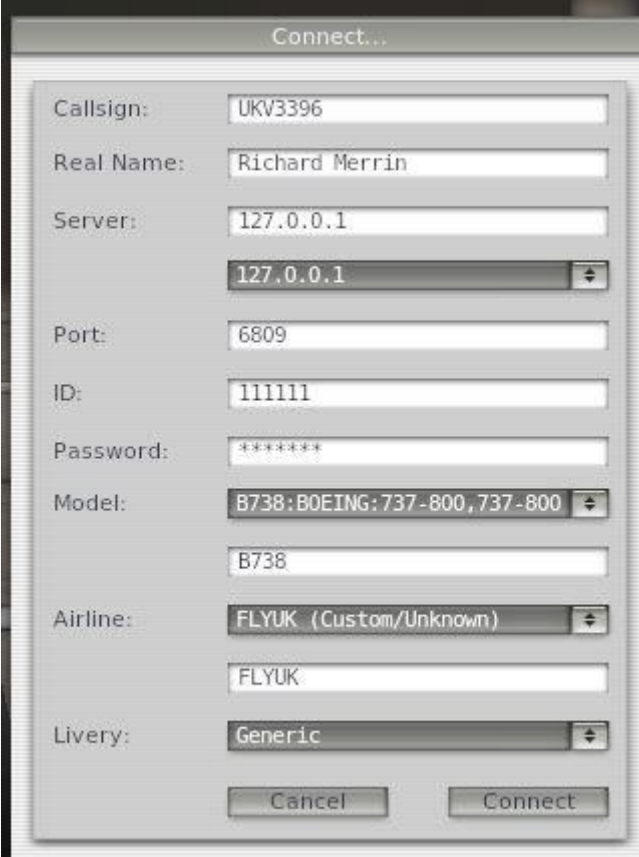
- 4) The 3rd box down from the top of the dialog is 'Server', change this to 127.0.0.1

Next box down is 'Port', this needs to be '6809', it probably already is.

Next down is 'ID', change this to '111111'

Next down is 'Password', change this to 'skyways'

The rest should not need changing, it should look like this (but with YOUR details):

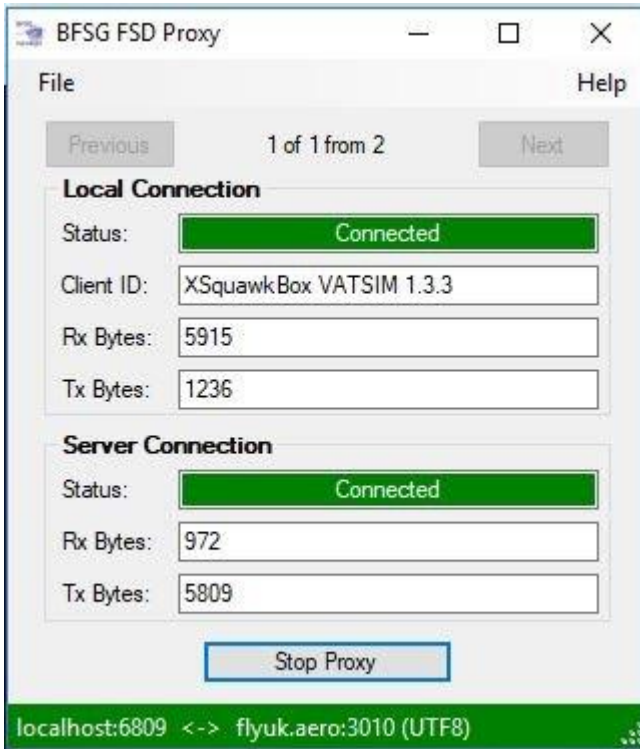


The screenshot shows the 'Connect...' dialog box in X-Plane. The settings are as follows:

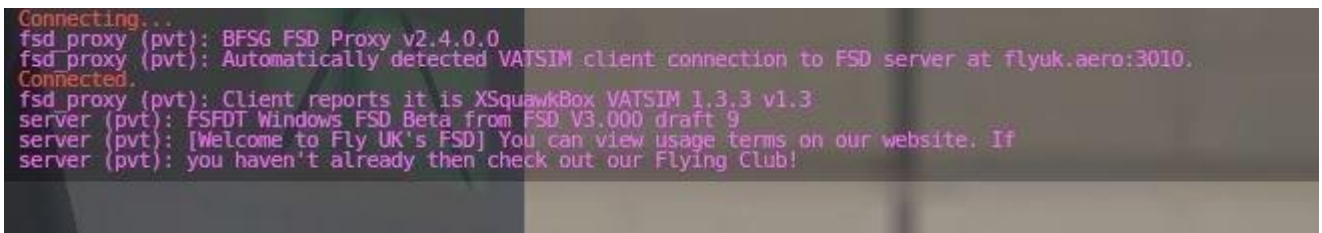
Field	Value
Callsign:	UKV3396
Real Name:	Richard Merrin
Server:	127.0.0.1
Port:	6809
ID:	111111
Password:	*****
Model:	B738:BOEING:737-800,737-800
Airline:	FLYUK (Custom/Unknown)
Livery:	Generic

Buttons: Cancel, Connect

- 5) Now when you click on 'Connect' as you would for Vatsim the BFSG Proxy should step into the connection and change to look like:



- 6) On screen in X-Plane you should see the usual Vatsim connection message is different and now looks like: (this could vary over time I guess).



- 7) Done. You're on FSD on X-Plane 😊